



BCGP Management Committee
Tel: (+86)10-69443829
BCGP German Office
Tel: (+49)17634989414
E-mail: sy.service@bcgp.org.cn
Address: China-Germany Plaza, South of Huihai Rd, Shunyi District, Beijing 101300

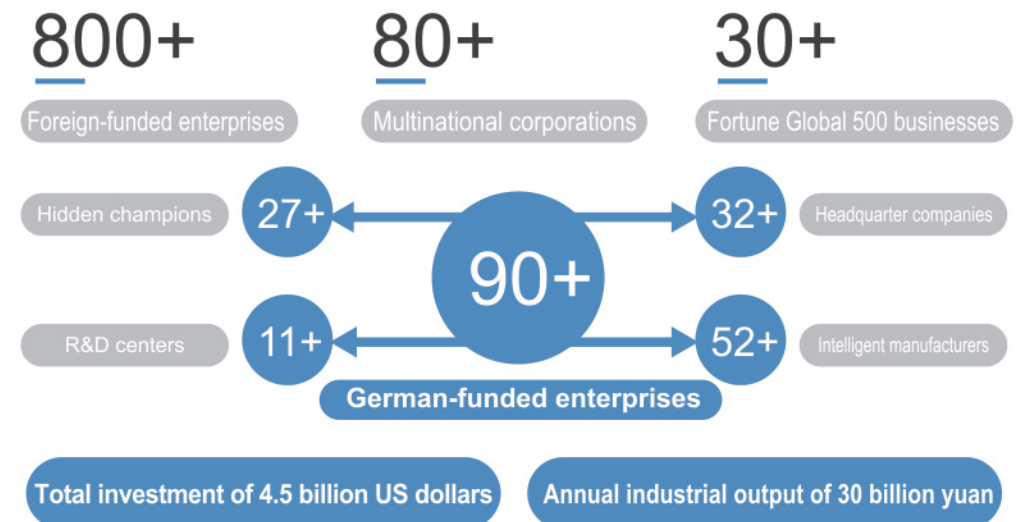
Beijing, the capital of China, is the world's only city to host both the Summer and Winter editions of the Olympic Games, and the only city entitled to combined policies of "Integrated National Demonstration Zone for Opening up the Services Sector" and "Pilot Free Trade Zone" in China, enjoying the leading advantages of national opening-up. As one of the most livable cities in the world, Beijing provides fertile ground for global enterprises to invest and develop, thanks to the integration of high-end factors, sound business environment and numerous investment opportunities. It is home to over 45,000 foreign-invested enterprises from more than 165 countries and regions, and 35,000 permanent offices of foreign countries. More than 4,000 regional headquarters and R&D centers, and 55 headquarters of Fortune Global 500 companies have gathered here.



Shunyi is an important gateway for Beijing's international exchanges and a high-end industrial agglomeration area, reputed as a "famous city in the capital region" with a history of more than 2,000 years. It covers an area of 1,021 square kilometers, with a long-term resident population of 1.32 million, and a green coverage rate of 56%. Shunyi is China's aviation hub, home to the Beijing Capital International Airport, with an airport economy scale exceeding 100 billion yuan. The District is widely known for its automobile sector, with a cumulative production of more than 12 million vehicles. Shunyi has an international presence, with nearly 10,000 long-term residents of foreign nationalities, 11 top international schools, more than 700 foreign-funded enterprises, over 80 multinational corporations, and more than 30 Fortune Global 500 companies.

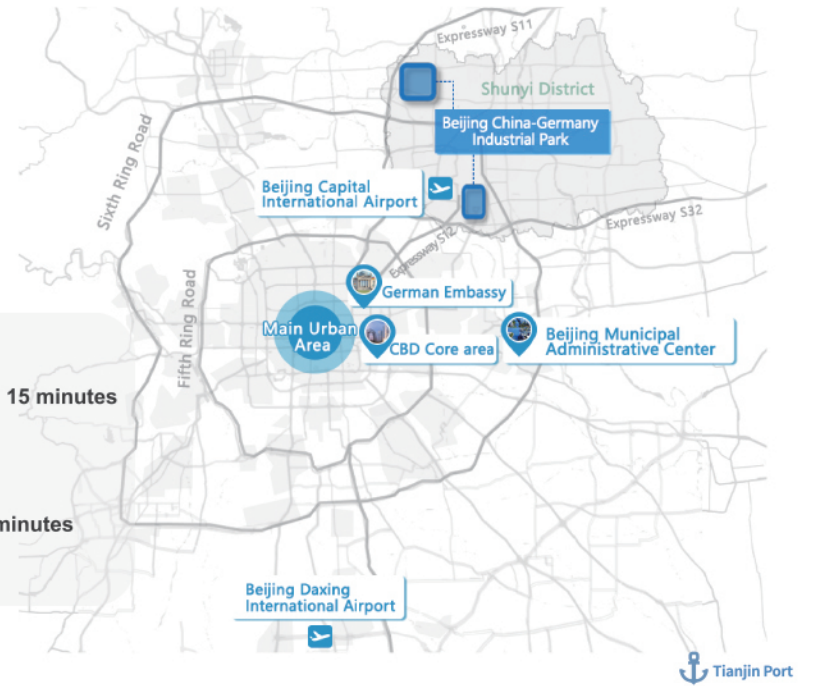
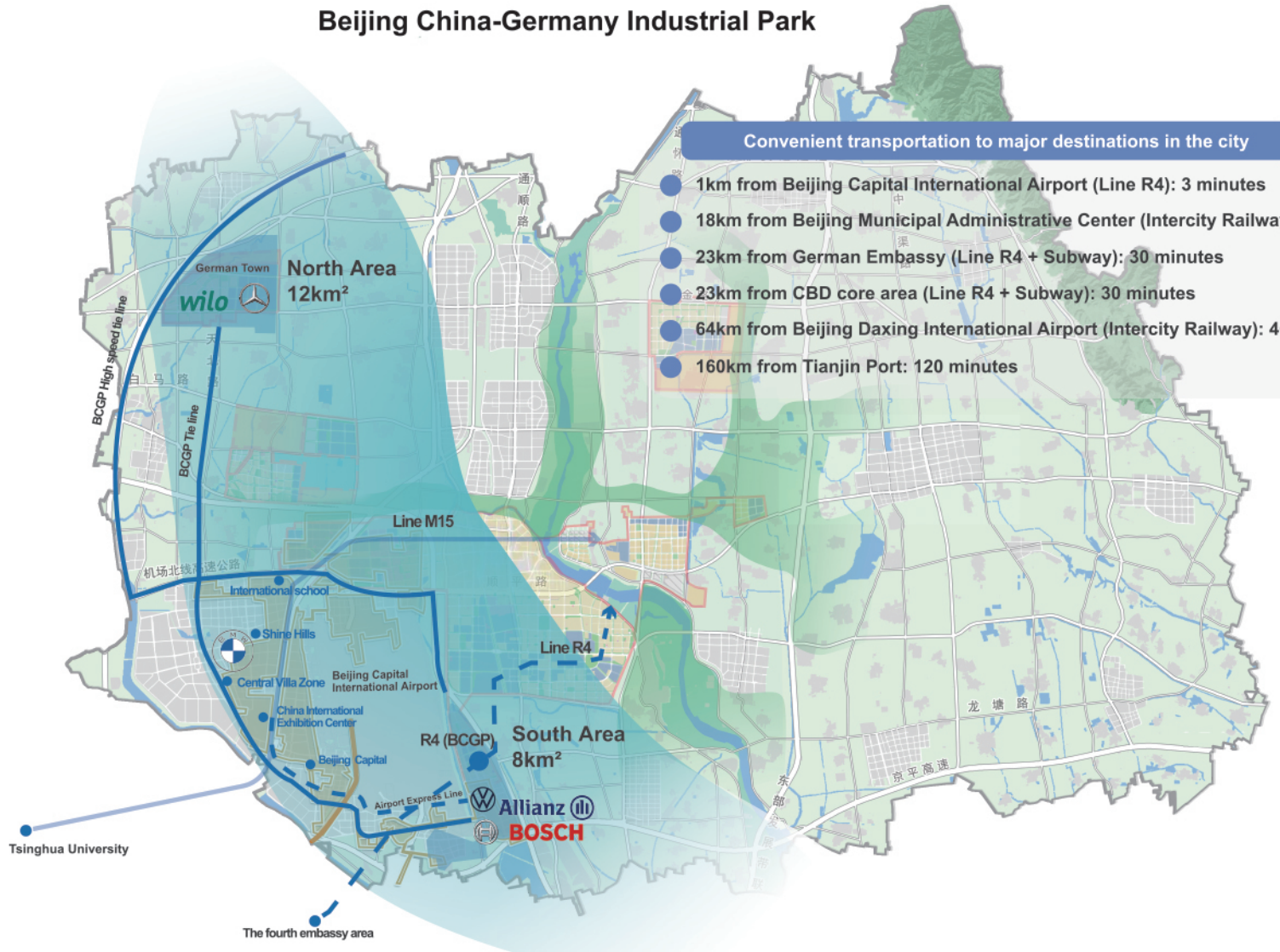


Beijing China-Germany Industrial Park is the main carrier of Beijing China-Germany Economic and Technological Cooperation Demonstration Zone as the first national-level German cooperation park under the theme of "economic and technological" cooperation. It undertakes national-level German exchange activities, builds a national-level German cooperation platform, serves national-level German cooperation projects, and connects resources for national German cooperation. As a China-Germany cooperation center park, Beijing China-Germany Industrial Park joins hands with local governments, industry associations, universities, research institutes, and companies from both China and Germany to explore and implement new paths of China-Germany economic and technological cooperation with "joint innovation and integrated development", jointly composing a new future for China-Germany cooperation!



Spatial Layout

Beijing China-Germany Industrial Park



Beijing China-Germany Economic and Technological Cooperation Demonstration Zone is developed based on Beijing China-Germany Industrial Park. Covering 20 square kilometers in total, it comprises the South Area and the North Area. Located in the vicinity of the Beijing Capital International Airport, China International Exhibition Center, Central Villa Zone, Shine Hills, and a cohort of living and production facilities, the Industrial Park enjoys coordinated industrial development, spatial interconnectivity, and city-industry integration.

The South Area

Covering an area of 8 square kilometers, the South Area is located to the east of the Beijing Capital International Airport. It boasts internationalized facilities, accessible transportation, and great environment. Relying on the existing buildings of nearly 2.86 million square meters, the South Area houses German hidden-champion enterprises, headquarter companies, and tech service platforms providing R&D, incubation, business, finance, and other services.

The North Area

Covering an area of 12 square kilometers, the North Area is located close to the Huairou Science City and Future Science Park. As a hub of "intelligent manufacturing", it has gathered leading German-funded enterprises such as BBAC and Wilo. With more than 2.7 km² of land for industrial purposes, the North Area undertakes intelligent manufacturing, green manufacturing, and other industrialization functions. A German-style town and a China-Germany international school are under planning and construction here, and the North Area is being upgraded as a new highland of intelligent manufacturing.

Industrial Positioning

Industrial Development System



Intelligent Equipment



New Energy Intelligent Vehicles



Digital Economy



S&T Services



Industrial Design



Business Exhibition



Industrial Finance

Advanced Manufacturing Services

Representative German-funded Companies



Representative Industrial Leaders



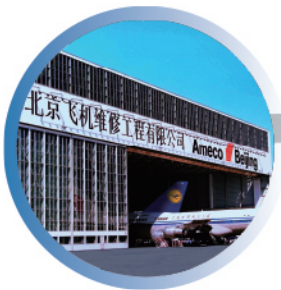
The Road of Cooperation



1989

Early Development

The first ever Sino-foreign joint venture in aircraft maintenance in China – Ameco – was settled in the Park, starting the path to China-Germany economic and technological cooperation in Shunyi District.



2020

Completion of Planning

Bosch Industry 4.0 Innovation Center and Agile Robots settled, forming a cluster of 56 German-funded enterprises with an annual output value of 26 billion yuan



2019

Start of Construction

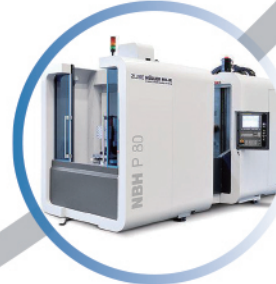
BBAC Shunyi Plant and BMW R&D Center settled, forming a cluster of 49 German-funded enterprises with an annual output value of 15 billion yuan



2021

Official Approval

Allianz settled, forming a cluster of 73 German-funded enterprises with an annual output value of 30 billion yuan



2022

Accelerated Construction

Hüller Hille settled, forming a cluster of over 90 German-funded enterprises with an annual output value of 35 billion yuan



2030

Demonstration and Leading

Home to more than 500 German-funded enterprises with an annual industrial output value exceeding 200 billion yuan, the Industrial Park sets to become a leader of international economic and technological cooperation with strong international influence, industrial competitiveness and innovation capacity.

2025

Forming Initial Scale

With more than 200 German enterprises with an annual industrial output value of 80 billion yuan, the Industrial Park has formed initial scale as a frontier of international opening-up and innovation in Beijing.

Joint Development Mutual Achievement

International Facilities

Ecological Environment



Colorful Mountain Scenic Area



International Flower Port

Living Conditions



International Talent Apartments



Central Villa Zone

Commercial Facilities



Shine Hills Shopping Center



Pinnacle Plaza

International Education



Keystone Academy



Dulwich College Beijing

Medical Services



Beijing Friendship Hospital



United Family Hospital

Smart Transport



Robo-taxi



Beijing Capital International Airport

Cultural Life



International Talent Community Half Marathon



Beijing International Yanjing Beer Culture Festival

Recreation & Entertainment



Luohong Art Museum



Shunyi Olympic Rowing-Canoeing Park

Trade & Exhibition



National Base for International Cultural Trade



New International Exhibition Center

Cases of Investment Facilitation



BBAC Shunyi New Energy Plant

Established a dedicated work team to form a process management list covering 77 factory construction needs, and addressed each item one by one.



Wilo Global Second Headquarters

Jointly planned and designed to support Wilo, which has been in operation locally for over 20 years, to increase capital and expand productions to build its second global headquarters.

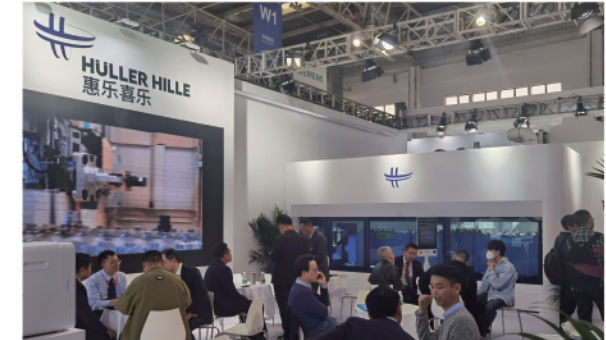
BMW (China) R&D Center

Tailor-developed high-quality, low-cost, and customized office R&D and production space of 17,000 square meters for BMW.



Hüller Hille R&D Application Base

Joined hands with Hüller Hille to participate in the China International Machine Tool Show held in China International Exhibition Center in Shunyi District, and accurately secured the Chinese partners.



Volkswagen Intelligent Logistics Equipment Headquarters

Implemented the "One Window" services, obtained the business license in one day, completed the decoration and renovation in three months, and realized quick operation.



Rhein Koester China Headquarters

Visited Rhein Koester to promote policies, followed-up on the application process, and facilitated the company in becoming one of the first foreign-funded enterprises to offer vocational training in Beijing, and also the first vocational skills training institution in the field of intelligent manufacturing in Beijing.

Bosch Industry 4.0 Innovation Center

Collaborated with Bosch Group to establish a diagnostic scenario for the transformation and upgrading of over 300 local manufacturing enterprises, and signed multiple business orders in the first year.



Vector Foiltec China Production Base

Participated in the construction of National Aquatics Centre (Water Cube), Shanghai Disney Resort and other projects, and created China's first ETFE membrane structure model.



Business Environment



Future Outlook

Going forward, an open, dynamic Beijing China-Germany Industrial Park will continue on the main path of high-quality development driven by high-level opening-up, with equality, mutual benefit and pragmatic cooperation as the core, prioritizing national position, joint innovation, integrated development and industrial promotion, in its pursuit of creating an innovative model of China-Germany economic and technological cooperation.



One-stop Services